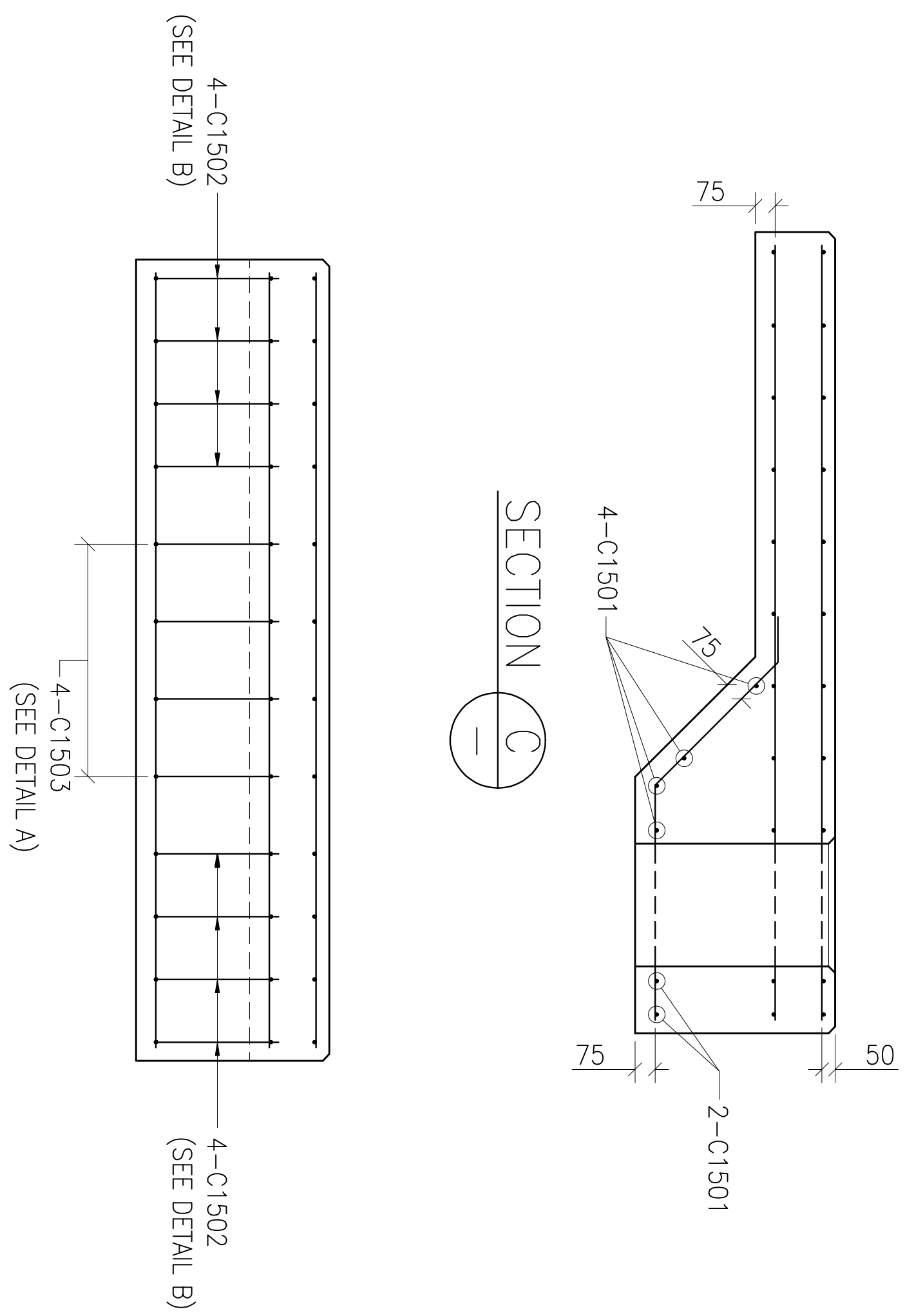
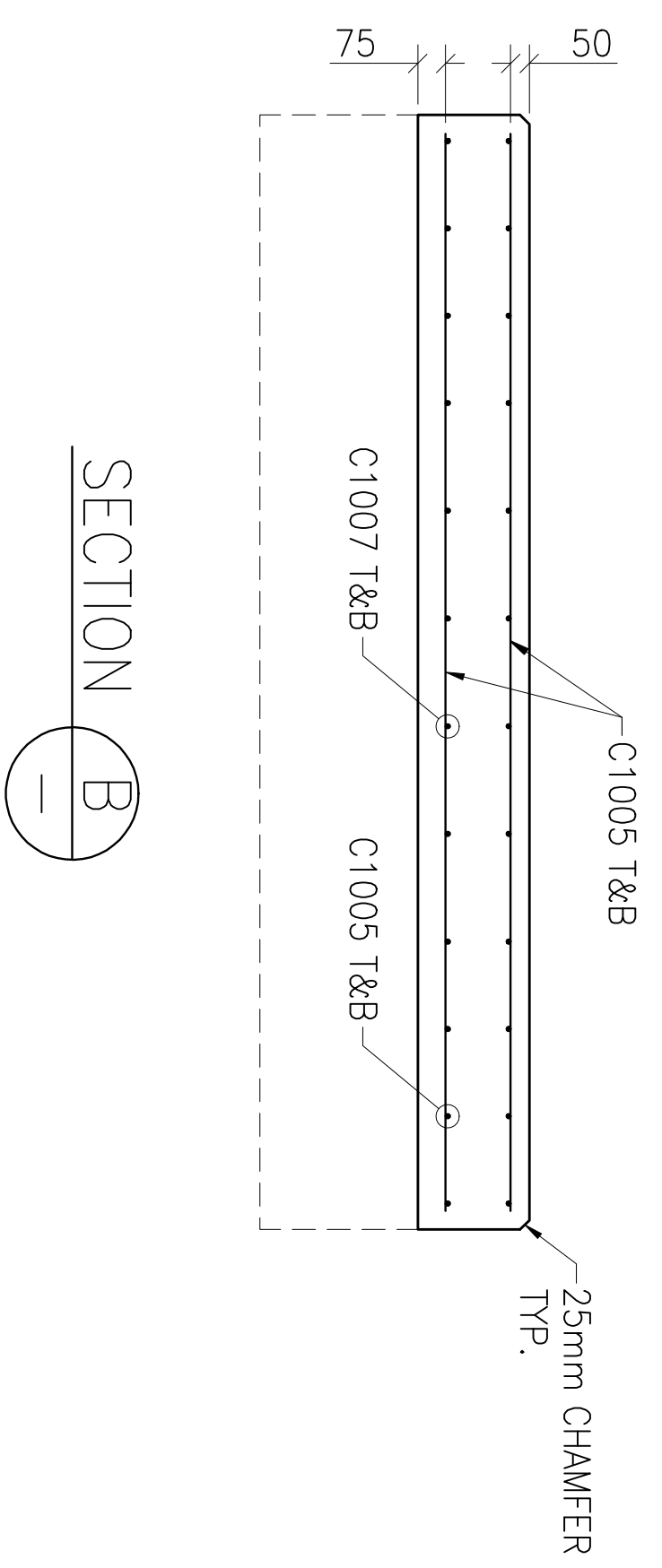
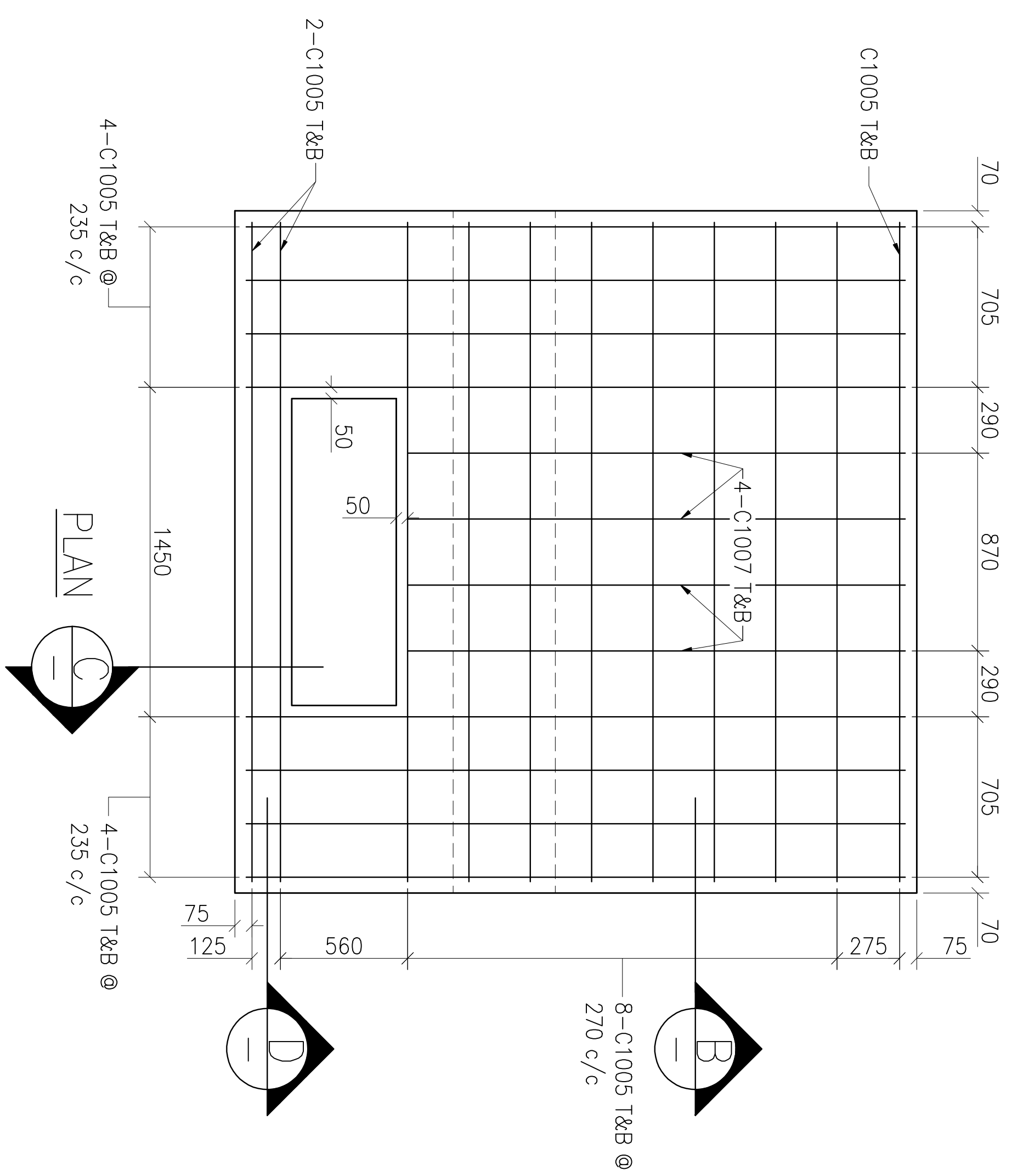


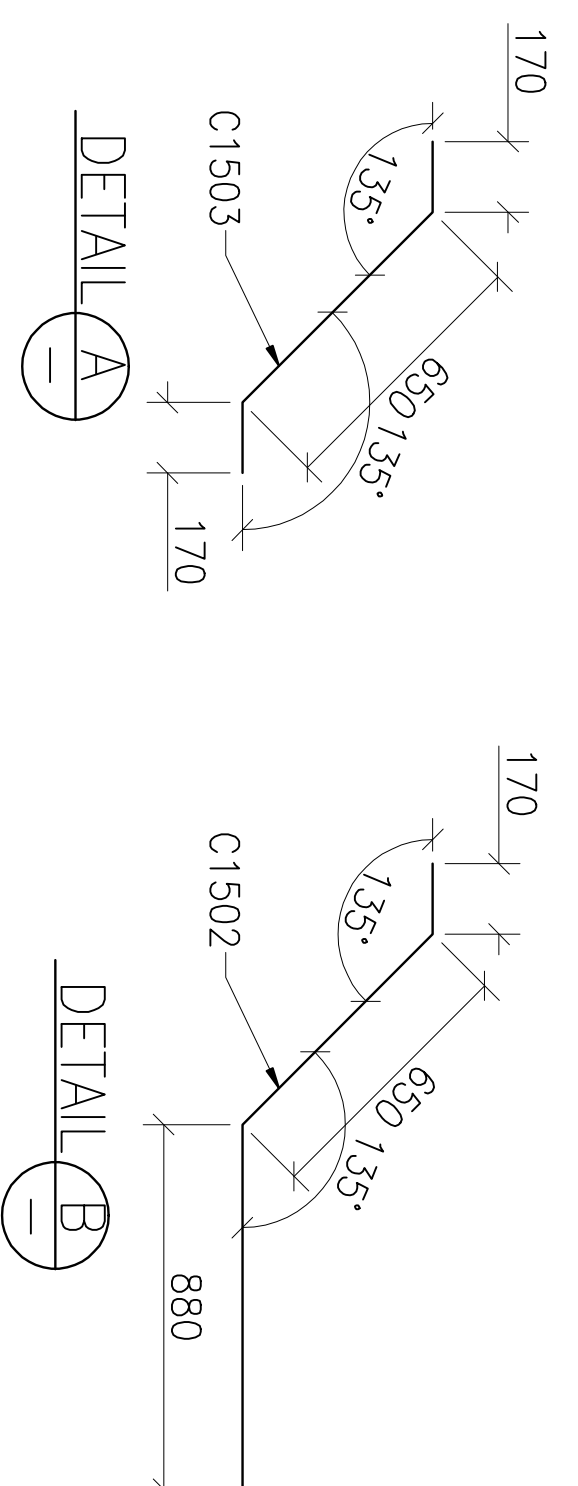
NOTES

- GENERAL**
- FOR HANDLING, STORAGE, TRANSPORTATION AND ERECTION PROCEDURES PLEASE REFER TO DAVYON/RICHMOND GUIDELINES FOR HANDLING CONCRETE PIPE AND UTILITY PRODUCTS.
 - TOLERANCE FOR STRUCTURAL ELEMENTS, MATERIALS & CONSTRUCTION CONFORM TO CAN/CSA A23.1 (LATEST EDITION) PRECAST CONCRETE CLAUSE 10.
 - APPROXIMATE WEIGHT:
500 - 4500kg
- REINFORCEMENT**
- ALL REINFORCING STEEL SHALL BE GRADE 400 AND CONFORM TO CAN/CSA G30.18 (LATEST EDITION).
 - ALL REINFORCING SHALL BE DETAILER PROVIDED (SEE DETAILS A-D) AND SHALL CONFORM TO CAN/CSA A23.4 (LATEST EDITION).
- DESIGN**
- STRUCTURAL DESIGN AS PER NSPI STANDARD DRAWING NO. RU-ED-11M/JAN/1994
- CONCRETE**
- CONCRETE MIX DESIGNS SHALL CONFORM TO REQUIREMENTS SET FORTH BY CAN/CSA A23.1 (LATEST EDITION) WITH THE FOLLOWING EXCEPTIONS:
 - CONCRETE STRENGTH = 21 MPa AT TIME OF STRIPPING
 - DESIGN CONCRETE STRENGTH OF 35 MPa AT 28 DAYS
 - 5% TO 8% AIR ENTRAINMENT
 - FOLLY LATE AGGREGATE SHALL BE USED WITH A NOMINAL AGGREGATE SIZE OF 20mm
 - CONCRETE CURING SHALL BE IN ACCORDANCE WITH CAN/CSA A23.1 (LATEST EDITION).
 - SHAW CONCRETE BATCH NO. SHALL BE 406.



REBAR SCHEDULE

C1005	-	10M BAR x 2900mm LG	-	38 REQ'D
C1007	-	10M BAR x 2190mm LG	-	8 REQ'D
C1501	-	15M BAR x 2900mm LG	-	6 REQ'D
C1502	-	15M BAR x 1700mm LG	-	8 REQ'D
C1503	-	15M BAR x 990mm LG	-	4 REQ'D



DRAWING NO. 2009NSPI0108	PROJECT TITLE NS POWER STANDARDS
DRAWING TITLE THREE PHASE PADMOUNT TRANSFORMER 750KV/A - 2500KV/A DEEP WELL DESIGN STANDARD REINFORCING	
DATE 10 DECEMBER 2009	DESIGNED BY SWAFF
DRAWN BY N. DIMOCK	CHECKED BY K. MACDOW
SHEET 2 OF 2	